

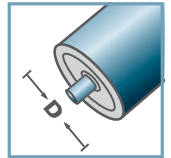
SLR	
Type	force portante C [daN]
SLR-480	20

Des dimensions ultérieures sur demande!

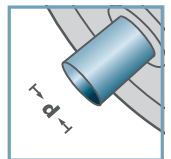
Galets de roulements: acier



SLR-



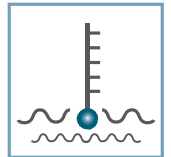
D [mm]
-



d [mm]
6; 8



C [daN]
20



T [°C]
-30° - 140°



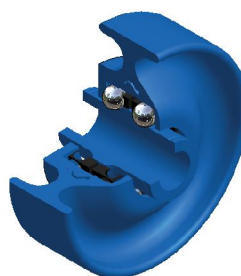
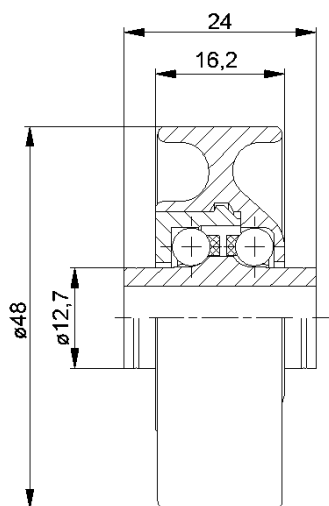
-



Carton [pc.]

250

KLR/SLR/SR



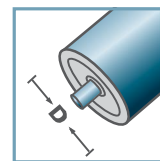
KLR-02/03			
Type	Normal	Inox	force portante
	.02	.03	C [daN]
KLR-480	x	x	15

Des dimensions ultérieures sur demande!

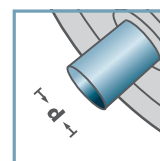
- ☛ Boîtier: plastique
- ☛ Moyeu: plastique
- ☛ Couverture des roulements: plastique
- ☛ Cage: plastique
- ☛ Boule
 - ☛ 02: acier
 - ☛ 03: 1.4034



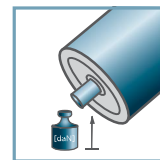
KLR-02
KLR-03



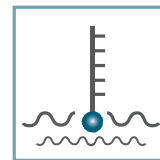
D [mm]
-



d [mm]
6; 8



C [daN]
15



T [°C]
0° - 80°



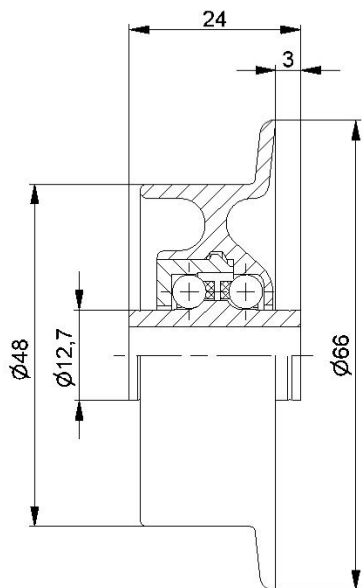
-



Carton [pc.]

250

KLR/SLR/SR



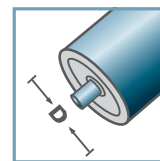
SR-02/03			
Type	Normal	Inox	force portante
	.02	.03	C [daN]
SR-480	x	x	10

Des dimensions ultérieures sur demande!

- ☛ Boîtier: plastique
- ☛ Moyeu: plastique
- ☛ Couverture des roulements: plastique
- ☛ Cage: plastique
- ☛ Boule
 - ☛ 02: acier
 - ☛ 03: 1.4034

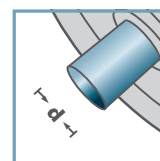


SR-02
SR-03



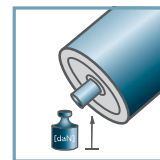
D [mm]

-



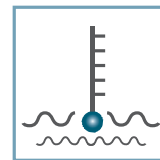
d [mm]

6; 8



C [daN]

15



T [°C]

0° - 80°



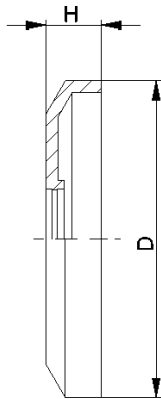
-



Carton [pc.]

250

KLR/SLR/SR



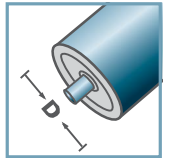
DK-KLR		
Type	D	H
DK-KLR-02	40,5	7

Des dimensions ultérieures sur demande!

Capot d'étanchéité: plastique

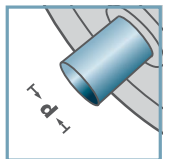


DK-KLR-02



D [mm]

-



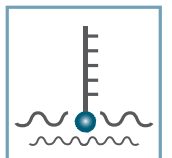
d [mm]

-



C [daN]

-



T [°C]

0° - 80°



-



Carton [pc.]



KLR/SLR/SR