

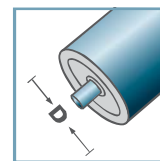
MTS-46			
Type	Di ±0.1	Da ±0.2	force portante C [daN]
MTS-63,5x2,9.46	58,1	61,5	200

**Des dimensions ultérieures sur demande!**

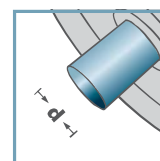
- ☛ Boîtier: acier, zingué
- ☛ Douille d'écartement: plastique
- ☛ Palier 6004



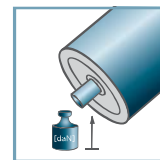
## MTS-46



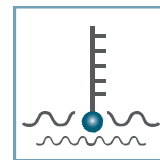
**D** [mm]  
63,5



**d** [mm]  
20



**C** [daN]  
200



**T** [°C]  
0° - 100°

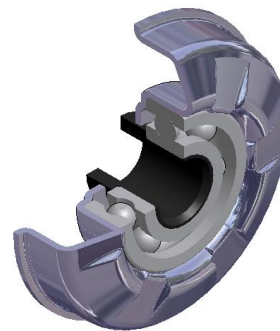
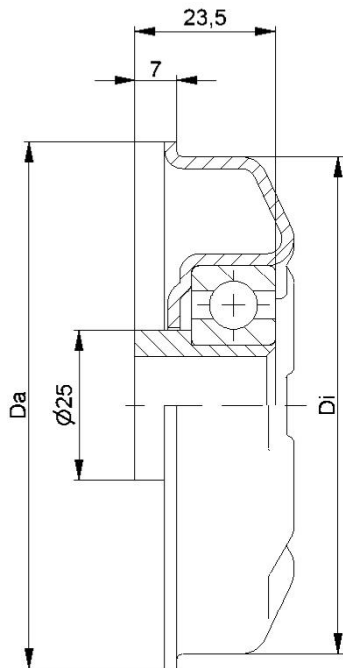


EP 2

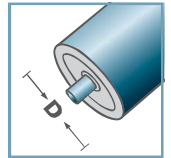


Carton [pc.]

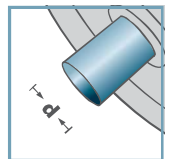
50/100



## MTS-44



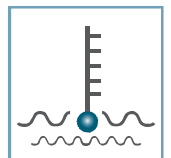
**D** [mm]  
80 - 108



**d** [mm]  
16; 17; SW14



**C** [daN]  
250



**T** [°C]  
0° - 100°



EP 2



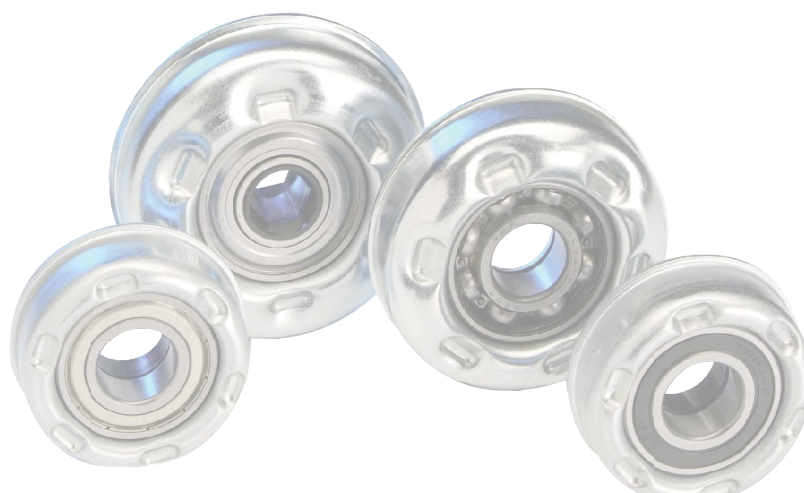
Carton [pc.]

50

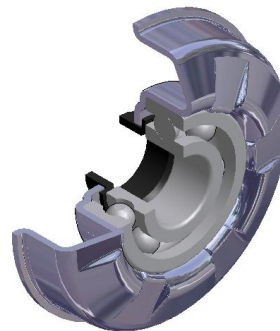
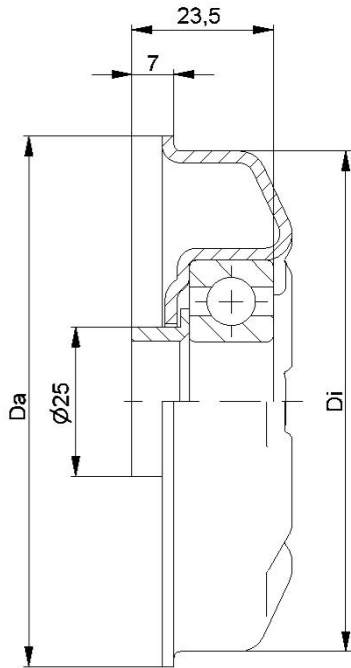
MTS-44			
Type	Di ±0.1	Da ±0.2	force portante C [daN]
MTS-80x2,0.44	76,5	79,5	250
MTS-80x3,0.44	74,5	79,5	250
MTS-89x3,0.44	83,5	88,5	250
MTS-89x3,25.44	83,0	88,5	250
MTS-108x3,25.44	102,0	107,5	250

### Des dimensions ultérieures sur demande!

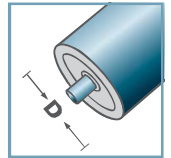
- ☛ Boîtier: acier, zingué
- ☛ Douille de réduction: plastique
- ☛ Palier 6204



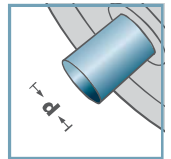
# MTS



## MTS-44



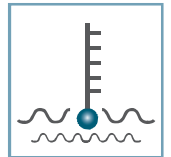
**D** [mm]  
80 - 108



**d** [mm]  
20



**C** [daN]  
250



**T** [°C]  
0° - 100°



EP 2



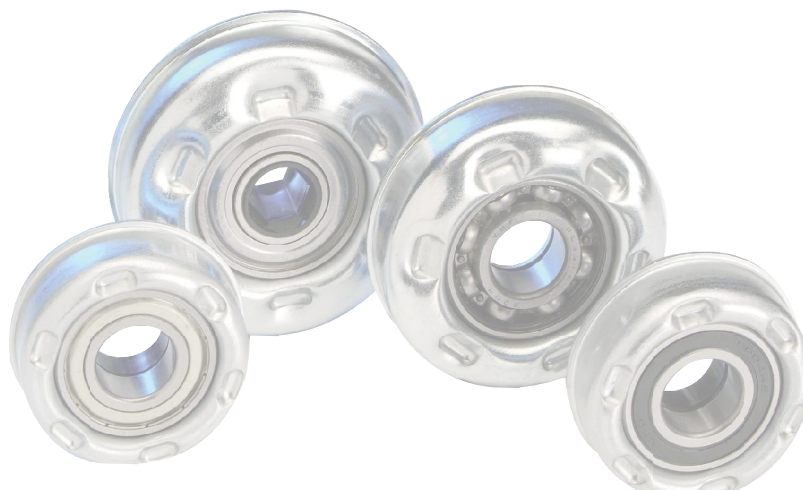
Carton [pc.]

50

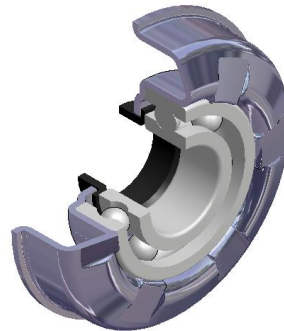
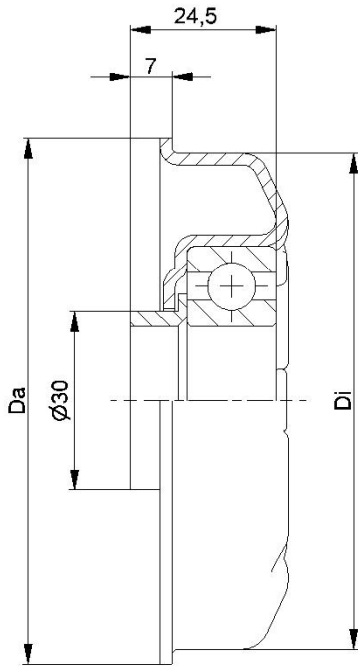
MTS-44			
Type	Di ±0.1	Da ±0.2	force portante C [daN]
MTS-80x2,0.44	76,5	79,5	250
MTS-80x3,0.44	74,5	79,5	250
MTS-89x3,0.44	83,5	88,5	250
MTS-89x3,25.44	83,0	88,5	250
MTS-108x3,25.44	102,0	107,5	250

### Des dimensions ultérieures sur demande!

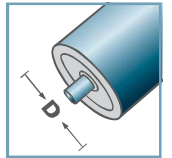
- ☛ Boîtier: acier, zingué
- ☛ Douille d'écartement: plastique
- ☛ Palier 6204



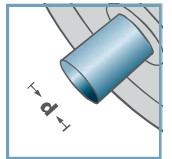
# MTS



**MTS-47**



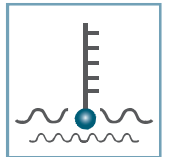
**D** [mm]  
89 - 108



**d** [mm]  
25



**C** [daN]  
250



**T** [°C]  
0° - 100°



EP 2



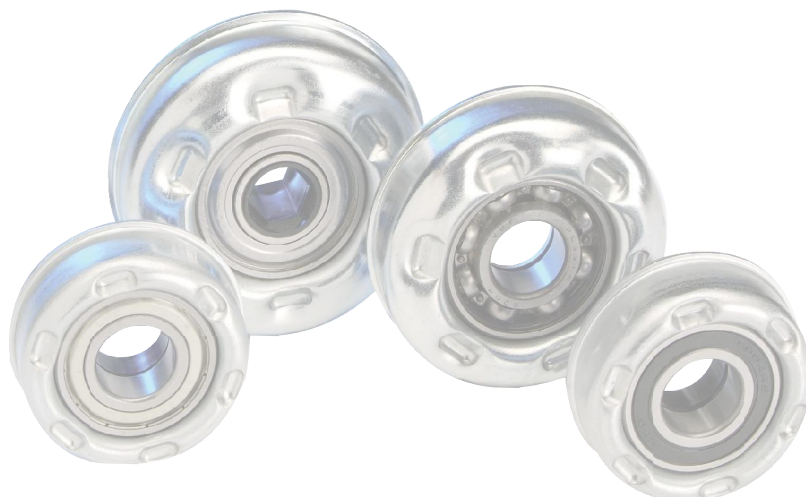
Carton [pc.]

50

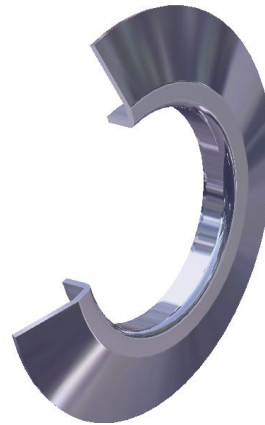
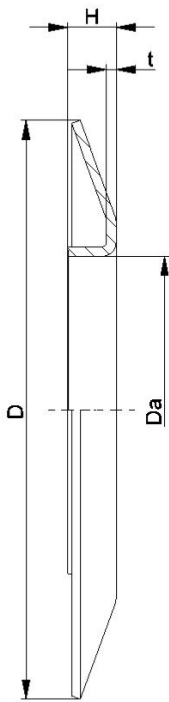
MTS-47			
Type	Di ±0.1	Da ±0.2	force portante C [daN]
MTS-89x3,0.47	83,5	88,5	250
MTS-108x3,25.47	102,0	107,5	250

**Des dimensions ultérieures sur demande!**

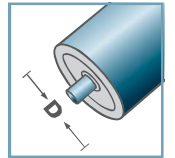
- ☛ Boîtier: acier, zingué
- ☛ Douille d'écartement: plastique
- ☛ Palier 6205



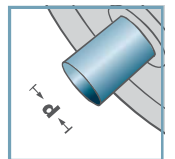
**MTS**



BS-



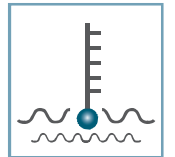
**D** [mm]  
50 - 108



**d** [mm]  
-



**C** [daN]  
-



**T** [°C]  
-



-



**Carton** [pc.]

BS-				
Type	Da ±0.1	D -2	H ±0.5	t
BS-50-130	49,9	130	10	1,5
BS-60-130	59,9	130	10	1,5
BS-80-150	79,9	150	14	2,5
BS-89-150	88,9	150	14	2,5
BS-108-150	107,9	150	14	2,5

**Des dimensions ultérieures sur demande!**

Disque de guidage: acier



**MTS**