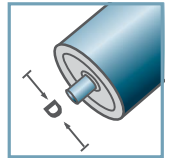
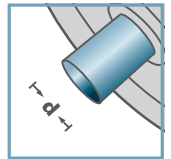


**VR-40**



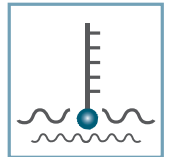
**D** [mm]  
50



**d** [mm]  
-



**C** [daN]  
-



**T** [°C]  
0° - 80°



-



**Carton** [pc.]

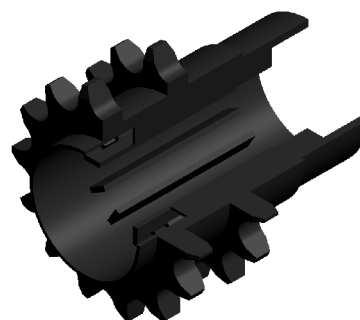
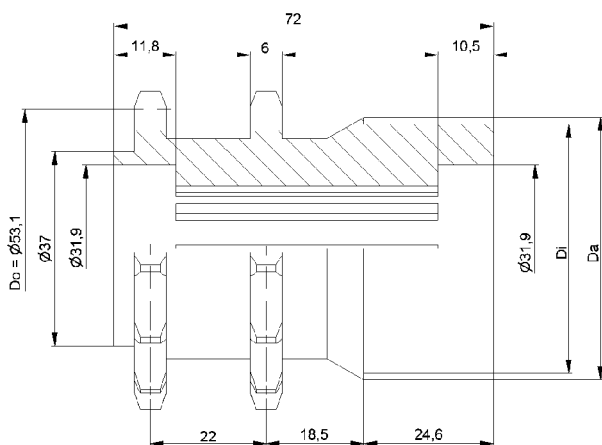
VR-		
Type	Di	Da
50x1,5.40	47,3	49,8

**Courroies d'entraînement disponibles sur demande**

**C** Boîtier: plastique



# Embout entraine par pignon



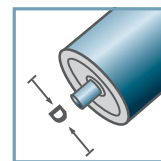
KKR-1/2"x5/16"-Z13		
Type	Di +0,2	Da
50x1,5.40	47,3	49,9

**Des dimensions ultérieures sur demande!**

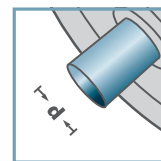
Boîtier: plastique



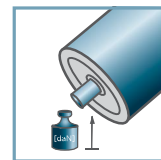
**KKR-40**



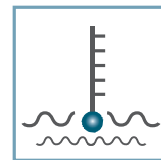
**D** [mm]  
50



**d** [mm]  
-



**C** [daN]  
-



**T** [°C]  
0° - 80°



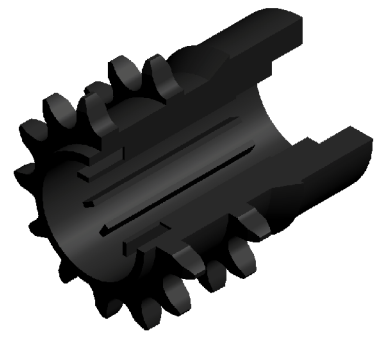
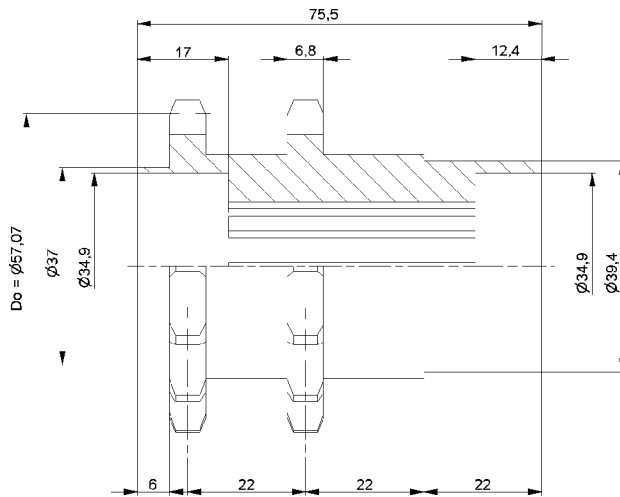
-



**Carton** [pc.]

100

# Embout entraine par pignon



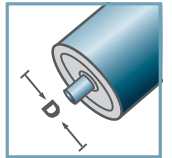
**KKR-1/2"x5/16"-Z14**

**Des dimensions ultérieurs sur demande!**

**C** Boîtier: plastique

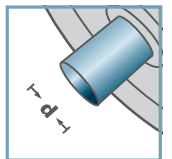


**KKR-40**



**D** [mm]

-



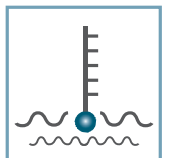
**d** [mm]

-



**C** [daN]

-



**T** [°C]

0° - 80°



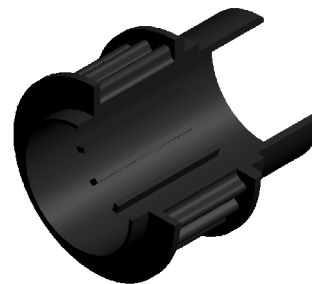
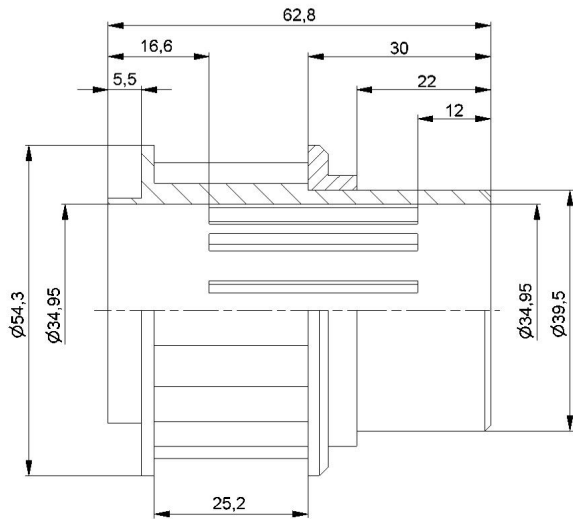
-



**Carton** [pc.]

500

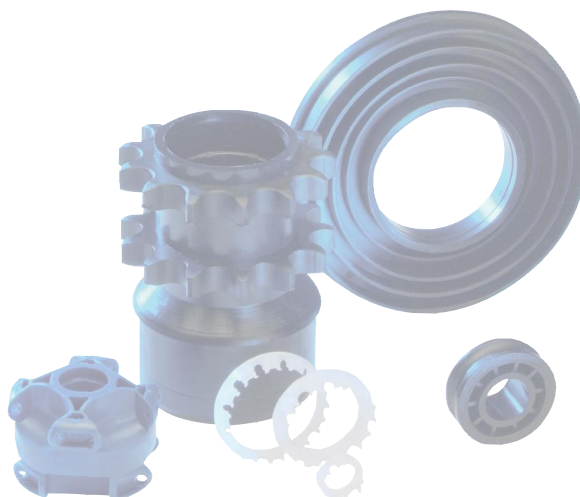
**Embout entraine par pignon**



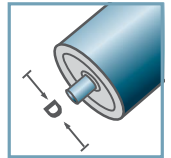
**KZA-Z20.40**

**Des dimensions ultérieurs sur demande!**

**C** Boîtier: plastique

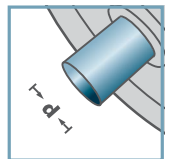


**KZA-40**



**D** [mm]

-



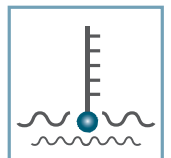
**d** [mm]

-



**C** [daN]

-



**T** [°C]

0° - 80°



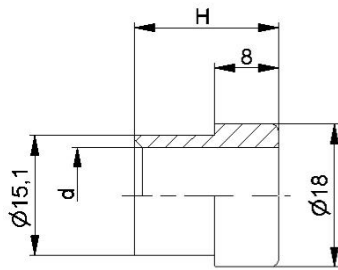
-



**Carton** [pc.]

140

**Entrainements par courroie crantée**



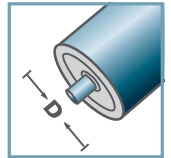
KKR-40		
	d	H
KKR-40	10	19
KKR-40	12	18
KKR-40	14	19
KKR-40	SW11	19

**Des dimensions ultérieurs sur demande!**

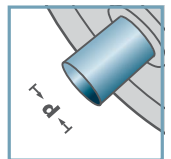
Douille de réduction: plastique



**KKR-40**



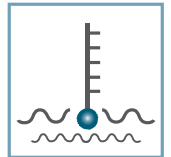
**D** [mm]  
-



**d** [mm]  
10; 12; 14; SW11



**C** [daN]  
-



**T** [°C]  
0° - 80°



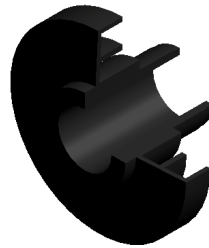
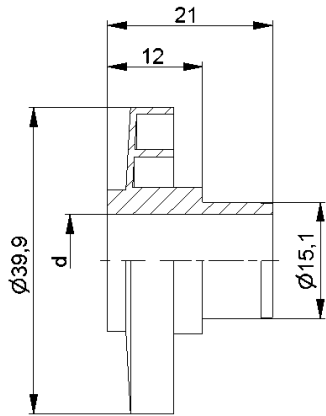
-



**Carton** [pc.]

500/8000

# Douille de réduction



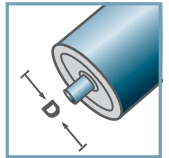
KKR-40	
Typ	d
KKR-40	10
KKR-40	12
KKR-40	14
KKR-40	SW11

**Des dimensions ultérieures sur demande!**

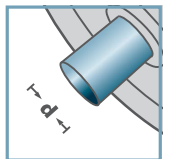
Labyrinthe: plastique



**KKR-40**



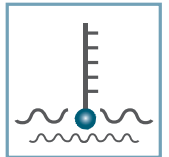
**D** [mm]  
-



**d** [mm]  
10; 12; 14; SW11



**C** [daN]  
-

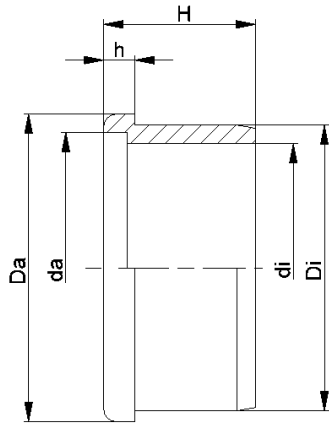


**T** [°C]  
0° - 80°

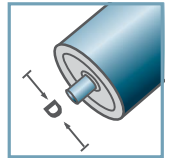


**Carton** [pc.]

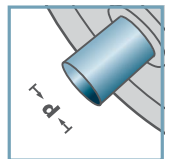
200/1000



**KKR-40**



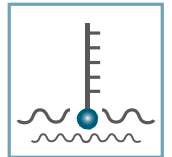
**D** [mm]  
50 - 60



**d** [mm]  
-



**C** [daN]  
-



**T** [°C]  
0° - 80°



-



**Carton** [pc.]

ø50: 800  
ø60: 250

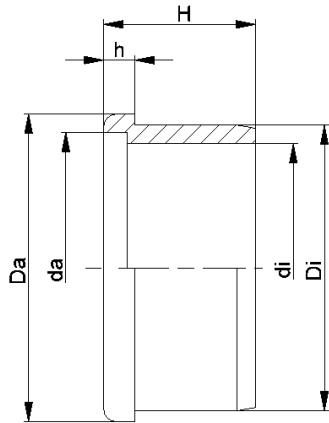
KKR-40						
Typ	Di	Da	di	da	H	h
50x1,5	47,25	50	39,3	42,6	25,2	5
50x2,8	44,7	50	39,3	42,6	25,2	5
60x1,5	57,3	60	47,0	50,7	25,5	5
60x2,0	56,3	60	47,0	50,7	25,5	5

**Des dimensions ultérieures sur demande!**

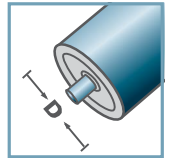
🔩 Anneau de glissement: plastique



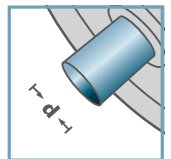
# Anneau de glissement fixe



**KKR-40**



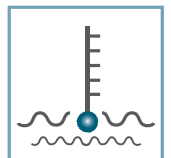
**D** [mm]  
50 - 60



**d** [mm]  
-



**C** [daN]  
-



**T** [°C]  
0° - 80°



-



**Carton** [pc.]

400

KKR-40						
Typ	Di	Da	di	da	H	h
50x1,5	47,2	50	40,6	44,6	25	5

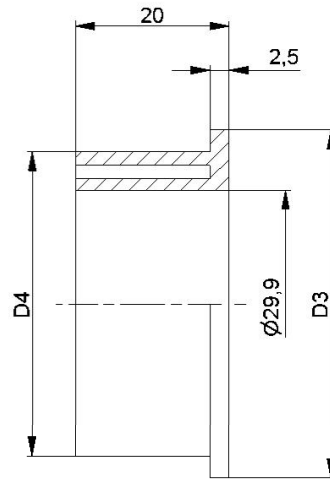
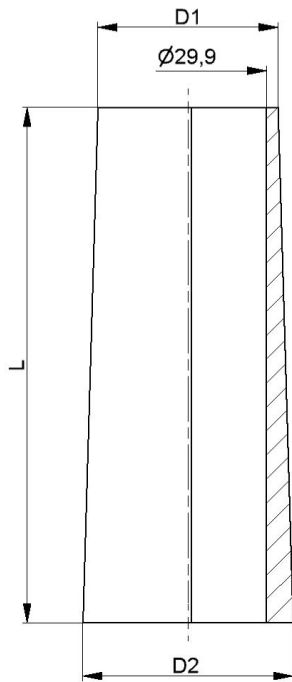
**Des dimensions ultérieurs sur demande!**

**C** Anneau de glissement: plastique

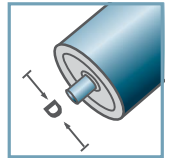


# Anneau de glissement

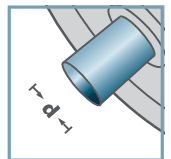




**KF-30**



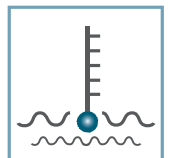
**D** [mm]  
30



**d** [mm]  
-



**C** [daN]  
-



**T** [°C]  
0° - 80°



**T** [°C]  
-



**Carton** [pc.]

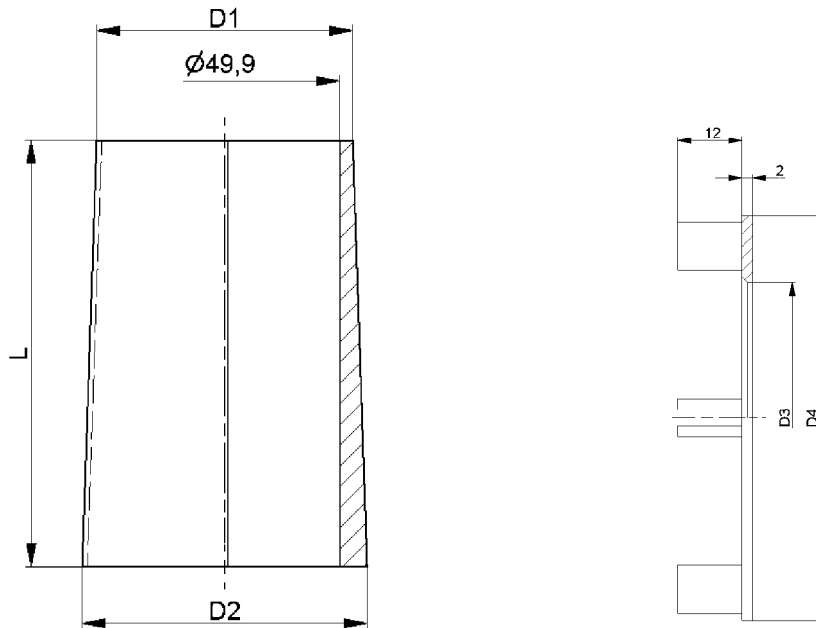
KF-30					
Type A	D1	D2	L	D3	D4
KF-30 I Type A	33,6	39,2	96,4	-	-
KF-30 II Type A	39,1	45,6	100,5	45,6	40
KF-30 III Type A	45,7	52,1	100,5	52,1	46,7
KF-30 IV Type A	52,2	58,8	100,5	57,9	57,9
KF-30 V Type A	58,6	65,1	100,5	64,9	60,0
KF-30 VI Type A	65,2	71,9	100,5	71,3	66,4

**Des dimensions ultérieures sur demande!**

- 🔧 Rouleau conique: plastique
- 🔧 Chapeau terminal: plastique





# Rouleau Conique



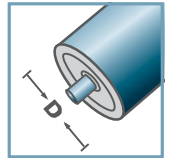
KF-50					
Type A	D1	D2	L	D3	D4
KF-50 I-a Type A	53,4	59,7	92,5	-	-
KF-50 I-b Type A	54,0	59,7	95,5	-	-
KF-50 II Type A	60,0	66,5	100,0	-	-
KF-50 III Type A	66,5	73,0	99,0	-	-
KF-50 IV Type A	73,5	80,0	100,0	50,6	75,5
KF-50 V Type A	80,0	86,5	99,5	50,7	81,7
KF-50 VI Type A	86,5	93,5	100,0	50,6	87,7
KF-50 VII Type A	93,5	100,0	100,0	50,6	94,3
KF-50 VIII Type A	100,0	106,5	95,5	-	-
KF-50 IX Type A	106,5	113,0	95,5	-	-
KF-50 X Type A	113,0	119,5	95,5	-	-

**Des dimensions ultérieures sur demande!**

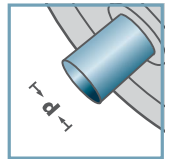
-  Rouleau conique: plastique
-  Chapeau terminal: plastique



### KF-50



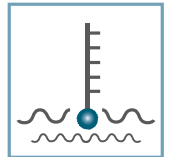
**D** [mm]  
50



**d** [mm]  
-



**C** [daN]  
-

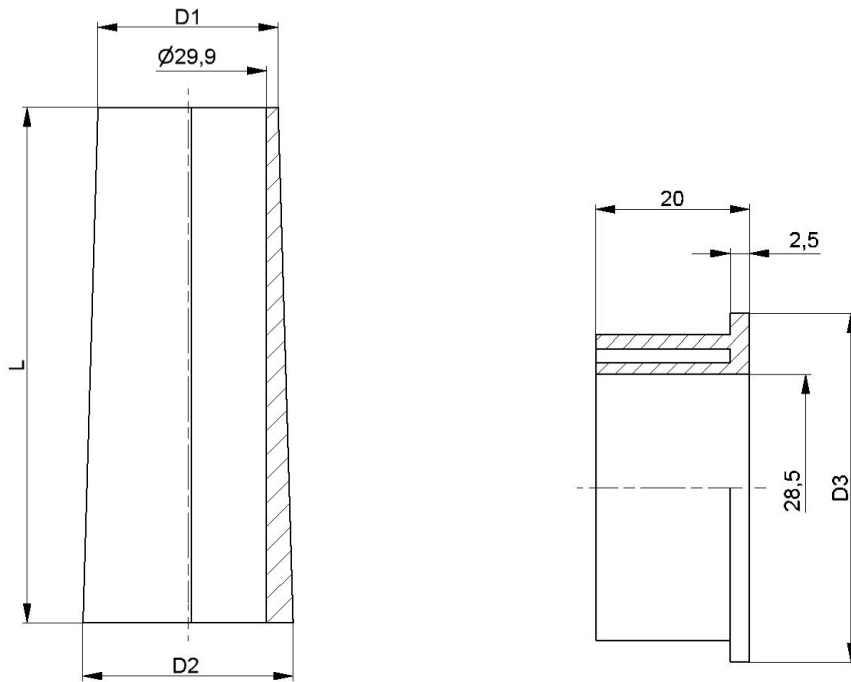


**T** [°C]  
0° - 80°

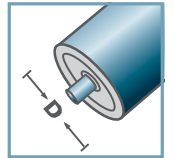


**Carton** [pc.]

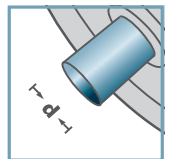
# Rouleau Conique



**KF-30**



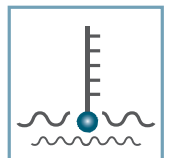
**D** [mm]  
30



**d** [mm]  
-



**C** [daN]  
-



**T** [°C]  
0° - 80°



-



**Carton** [pc.]

**KF-30**

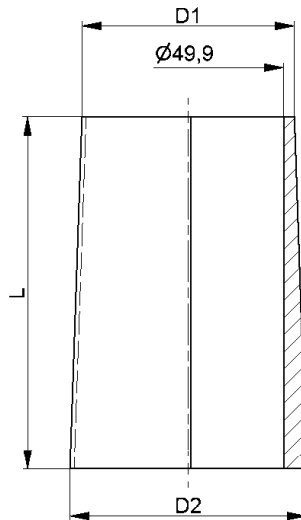
Type	D1	D2	D3	L
KF-30 I Type B	34,0	39,6	-	83
KF-30 II Type B	39,6	46,4	-	100
KF-30 III Type B	46,4	53,2	48,8	100
KF-30 IV Type B	53,2	59,9	55,8	100
KF-30 V Type B	59,9	66,7	62,3	100
KF-30 VI Type B	66,7	73,5	68,8	100

**Des dimensions ultérieurs sur demande!**

- Rouleau conique: plastique
- Chapeau terminal: plastique



# Rouleau Conique



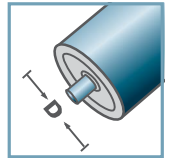
KF-50			
Type	D1	D2	L
KF-50 I Type B	54,0	59,9	90,0
KF-50 II Type B	59,9	66,6	100,0
KF-50 III Type B	66,6	73,4	100,0
KF-50 IV Type B	73,4	80,1	100,0
KF-50 V Type B	80,1	86,9	100,0
KF-50 VI Type B	86,9	93,6	100,0
KF-50 VII Type B	93,6	100,4	100,0
KF-50 VIII Type B	100,4	107,1	100,0
KF-50 IX Type B	107,1	113,9	100,0
KF-50 X Type B	113,9	120,9	100,0

**Des dimensions ultérieurs sur demande!**

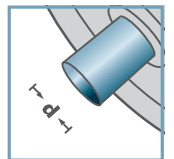
- 🔩 Rouleau conique: plastique
- 🔩 Chapeau terminal: plastique



### KF-50



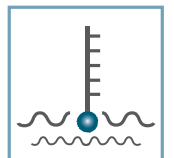
**D** [mm]  
50



**d** [mm]  
-



**C** [daN]  
-



**T** [°C]  
0° - 80°

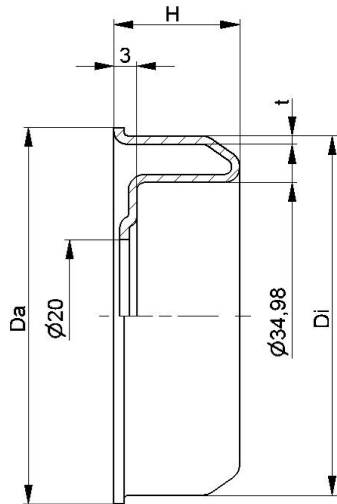


-

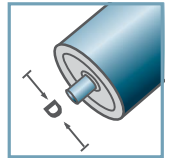


**Carton** [pc.]

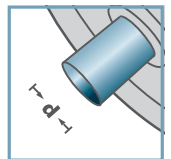
# Rouleau Conique



**MRK-40**



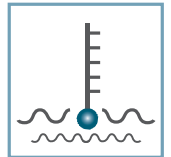
**D** [mm]  
50 - 60



**d** [mm]  
15



**C** [daN]  
-



**T** [°C]  
-



6202:  
D35; d15; H11



**Carton** [pc.]

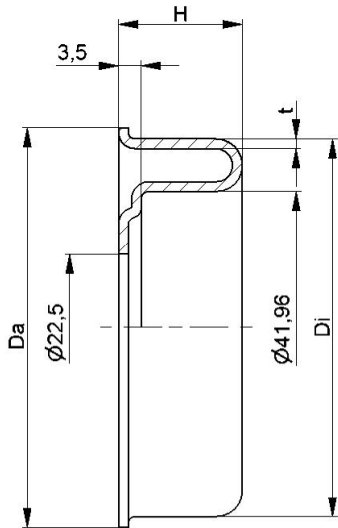
MRK-40				
Type	Di ±0,1	Da	H	t
MRK-50x1,5.40	47,3	49,5	16	1,2
MRK-50x2,0.40	46,3	49,5	16	1,2
MRK-60x2,0.40	56,3	59,5	16,5	1,5
MRK-60x3,0.40	54,3	59,5	16,5	1,5

**Des dimensions ultérieurs sur demande!**

**C** Boîtier: acier, zingué



# Boîtier acier

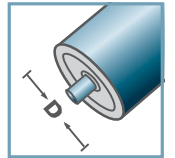


MRK-6004				
Type	Di ±0,1	Da	H	t
MRK-63,5x2,9/6004	58,1	61,5	19,0	1,5

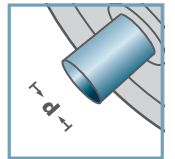
**Des dimensions ultérieures sur demande!**

**C** Boîtier: acier, zingué

**MRK-6004**



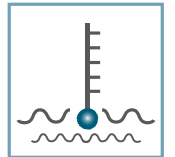
**D** [mm]  
63,5



**d** [mm]  
20



**C** [daN]  
-



**T** [°C]  
-



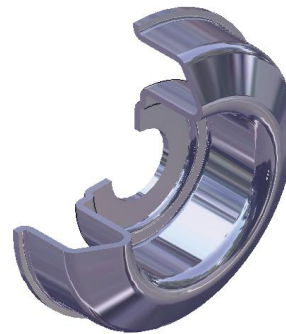
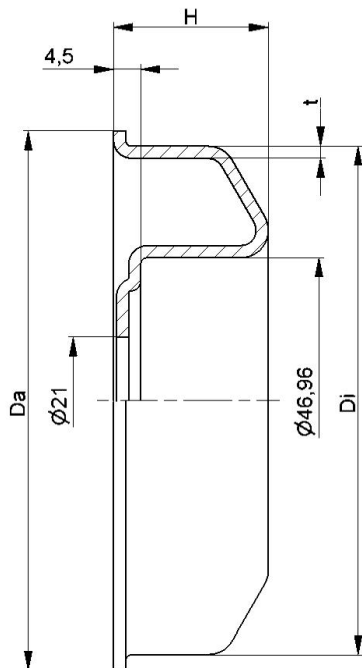
6004:  
D42; d20; H12



**Carton** [pc.]




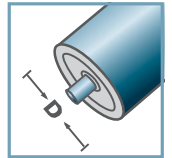
# Boîtier acier

**MRK-6204**

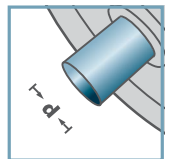
Type	Di ±0,1	Da	H	t
MRK-80x2,0/6204	76,5	79,5	23,5	2,0
MRK-80x3,0/6204	74,5	79,5	23,5	2,0
MRK-89x3,0/6204	83,5	88,5	23,5	2,0
MRK-89x3,25/6204	83,0	88,5	23,5	2,0
MRK-108x3,25/6204	102,0	107,5	25,0	2,0

**Des dimensions ultérieures sur demande!**

 Boîtier: acier, zingué

**MRK-6204**

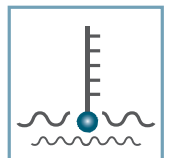
**D** [mm]  
80 - 108



**d** [mm]  
20



**C** [daN]  
-



**T** [°C]  
-

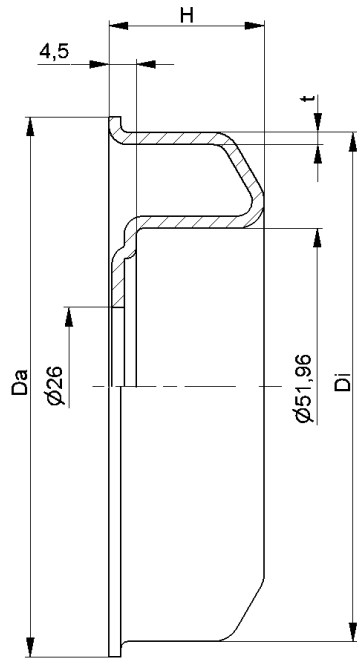


6204:  
D47; d20; H14



**Carton** [pc.]

# Boîtier acier



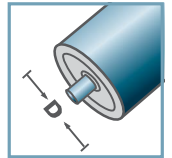
MRK-6205				
Type	Di ±0,1	Da	H	t
MRK-80x3,0/6205	74,5	79,5	23,5	2,0
MRK-89x3,0/6205	83,5	88,5	24,5	2,0
MRK-108x3,25/6205	102,0	107,5	25,5	2,0

**Des dimensions ultérieurs sur demande!**

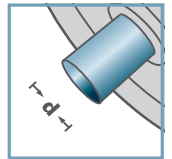
**C** Boîtier: acier, zingué



**MRK-6205**



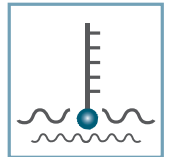
**D** [mm]  
80 - 108



**d** [mm]  
25



**C** [daN]  
-



**T** [°C]  
-



6205:  
D52; d25; H15



**Carton** [pc.]

**Boîtier acier**