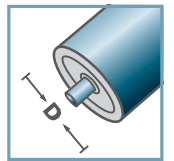
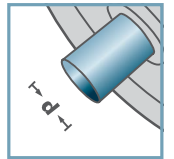


KTR-.00 FA
KTR-.01 FA



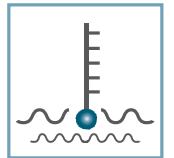
D [mm]
20, 30, 40



d [mm]
6; 8



C [daN]
8 - 10



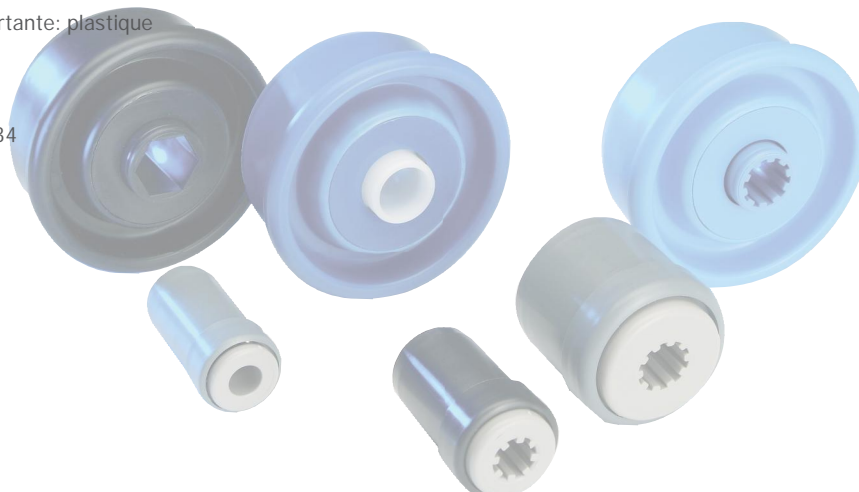
T [°C]
0° - 80°



KTR-.00/.01 FA						
Type	Normal .00	Inox .01	Di +0,25	Da	d	force portante C [daN]
KTR-20x1,5	x	x	17,1	19,9	6	8
KTR-30x1,8	x	x	26,5	29,9	8	10
KTR-40x2,3	x	x	35,5	39,9	8	10
KTR-50x2,8	x	x	44,6	49,9	10	15

Des dimensions ultérieures sur demande!

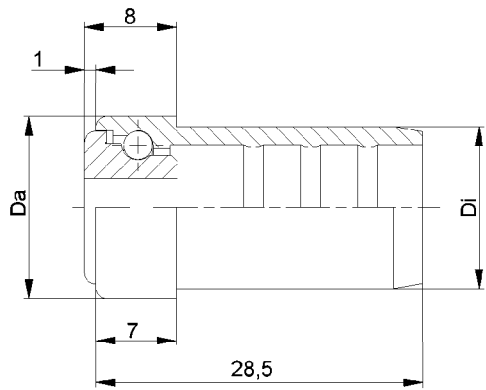
- ☛ Boitier: plastique
- ☛ Moyeu: plastique
- ☛ Cage: plastique
- ☛ Axe: plastique
- ☛ Rondelle supportante: plastique
- ☛ Boule, ressort
 - ☛ 00: acier
 - ☛ 01: 1.4034



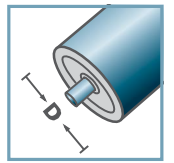
Carton [pc.]

ø20: 500/1000
ø30: 250/500
ø40: 250/500
ø50: 250

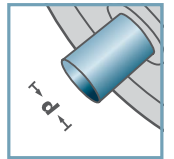
KTR



KTR-16.00
KTR-16.01



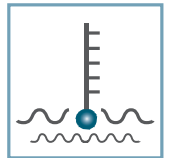
D [mm]
16



d [mm]
5; 6



C [daN]
3



T [°C]
0° - 80°

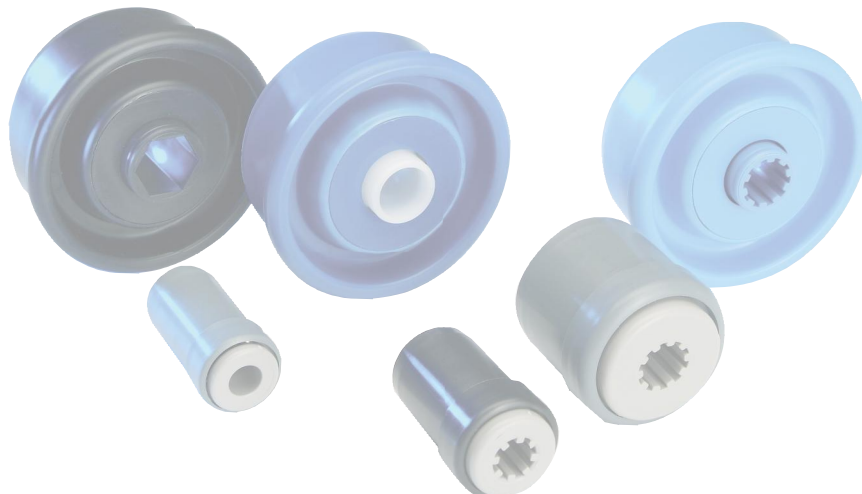


KTR-16.00/.01

Type	Normal .00	Inox .01	Di +0,15	Da	force portante C [daN]
KTR-16x1,0	x	x	14,1	15,9	3

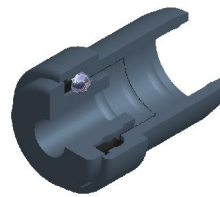
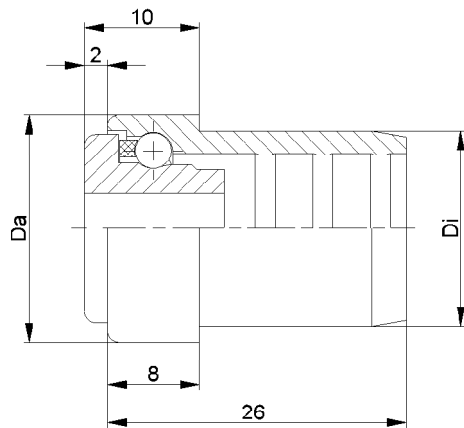
Des dimensions ultérieures sur demande!

- ☛ Boitier: plastique
- ☛ Moyeu: plastique
- ☛ Boule
 - ☛ 00: acier
 - ☛ 01: 1.4034

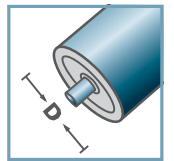


Carton [pc.]

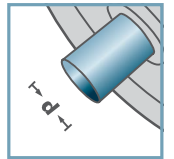
500/2500



KTR-20.00
KTR-20.01



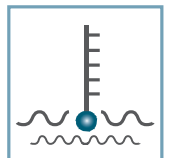
D [mm]
20



d [mm]
6; 8



C [daN]
5



T [°C]
0° - 80°

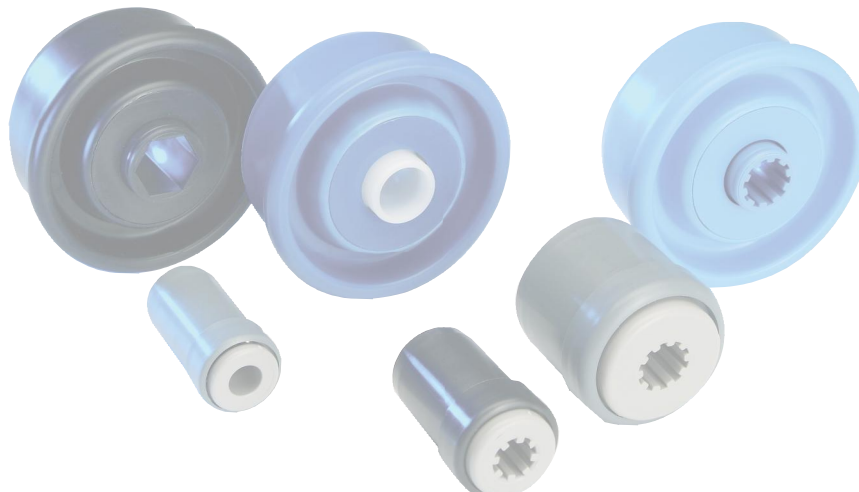


KTR-20.00/.01

Type	Normal .00	Inox .01	Di +0,15	Da	force portante C [daN]
KTR-20x1,0	x	x	18,1	19,9	5
KTR-20x1,5	x	x	17,1	19,9	5

Des dimensions ultérieures sur demande!

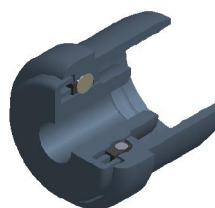
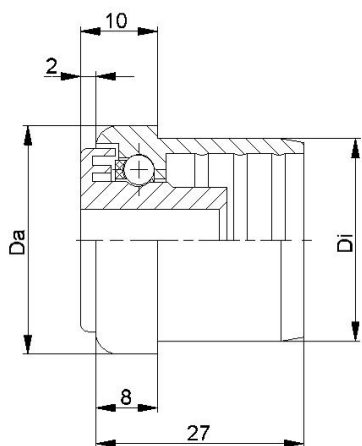
- ☛ Boitier: plastique
- ☛ Moyeu: plastique
- ☛ Cage: plastique
- ☛ Boule
 - ☛ 00: acier
 - ☛ 01: 1.4034



Carton [pc.]

500/1000

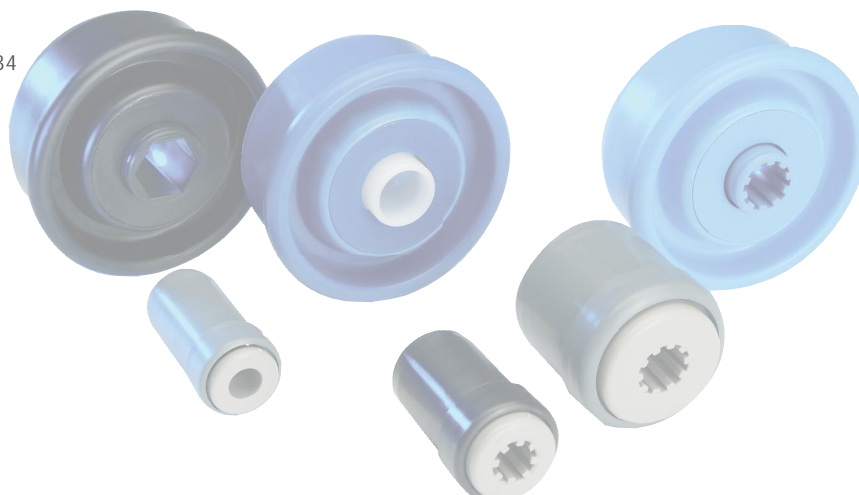
KTR



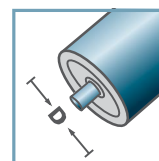
KTR-30.00/.01					
Type	Normal .00	Inox .01	Di +0,25	Da	force portante C [daN]
KTR-30x1,0	x	x	28,1	29,9	7
KTR-30x1,5	x	x	27,1	29,9	7
KTR-30x1,8	x	x	26,5	29,9	7
KTR-30x2,0	x	x	26,35	29,9	7

Des dimensions ultérieures sur demande!

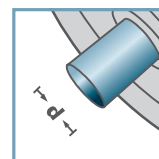
- ☛ Boitier: plastique
- ☛ Moyeu: plastique
- ☛ Cage: plastique
- ☛ Boule
 - ☛ 00: acier
 - ☛ 01: 1.4034



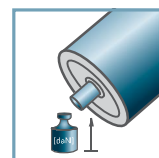
KTR-30.00
KTR-30.01



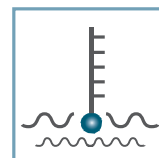
D [mm]
30



d [mm]
6; 8; 10



C [daN]
7

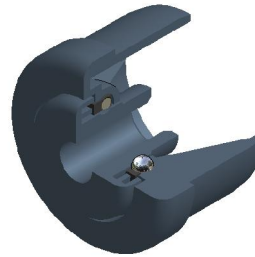
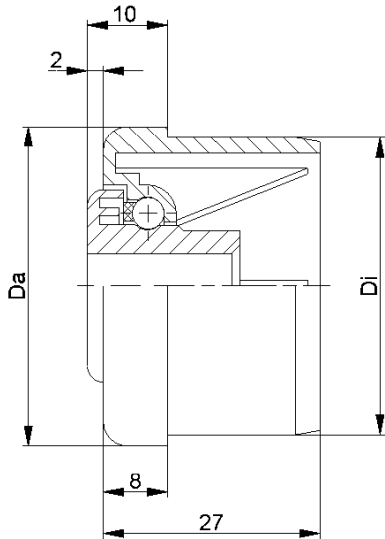


T [°C]
0° - 80°

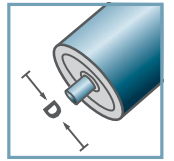


Carton [pc.]

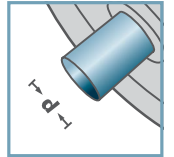
50/250/500



KTR-40.00
KTR-40.01



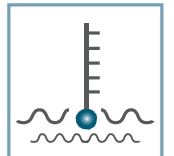
D [mm]
40



d [mm]
6; 8; 10



C [daN]
7



T [°C]
0° - 80°

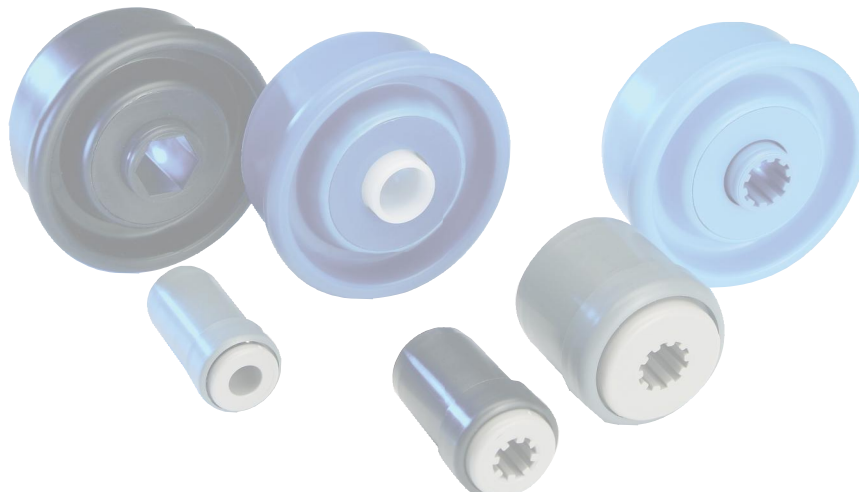


KTR-40.00/.01

Type	Normal .00	Inox .01	Di +0,25	Da	force portante C [daN]
KTR-40x1,5	x	x	37,1	39,9	7
KTR-40x2,3	x	x	35,5	39,9	7

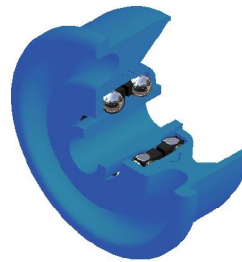
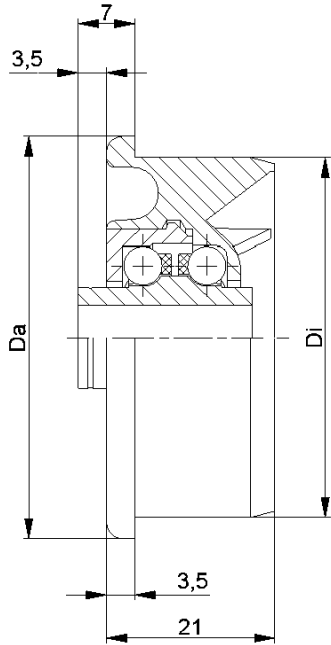
Des dimensions ultérieures sur demande!

- ☛ Boitier: plastique
- ☛ Moyeu: plastique
- ☛ Cage: plastique
- ☛ Boule
 - ☛ 00: acier
 - ☛ 01: 1.4034



Carton [pc.]

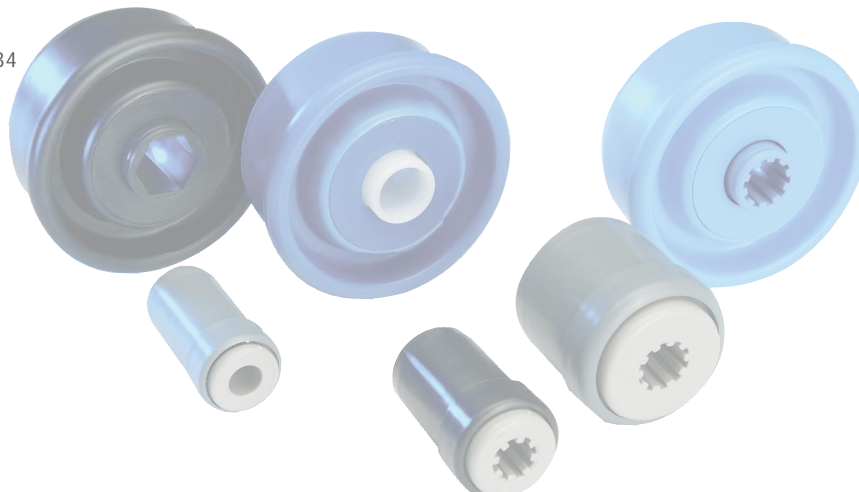
50/250



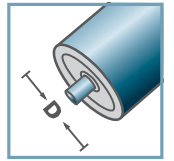
KTR-02/03					
Type	Normal .02	Inox .03	Di +0,2	Da	force portante C [daN]
KTR-50x1,5	x	x	47,3	49,9	15
KTR-50x2,0	x	x	46,3	49,9	15
KTR-50x2,8	x	x	44,6	49,9	15

Des dimensions ultérieures sur demande!

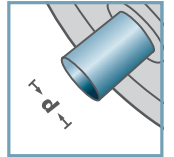
- ☛ Boitier: plastique
- ☛ Moyeu: plastique
- ☛ Couvercle des Roulements: plastique
- ☛ Cage: plastique
- ☛ Boule
 - ☛ 02: acier
 - ☛ 03: 1.4034



KTR-02
KTR-03



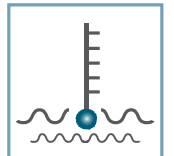
D [mm]
50



d [mm]
8; 10



C [daN]
15



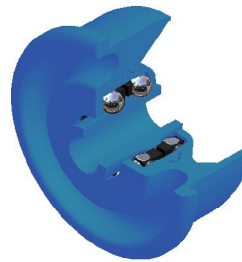
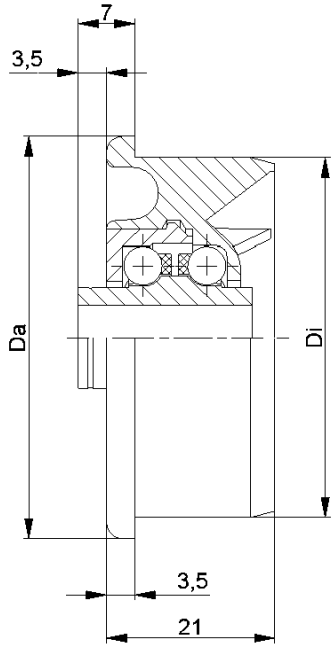
T [°C]
0° - 80°



Carton [pc.]

50x1,5: 250
50x2,0: 250
50x2,8: 250

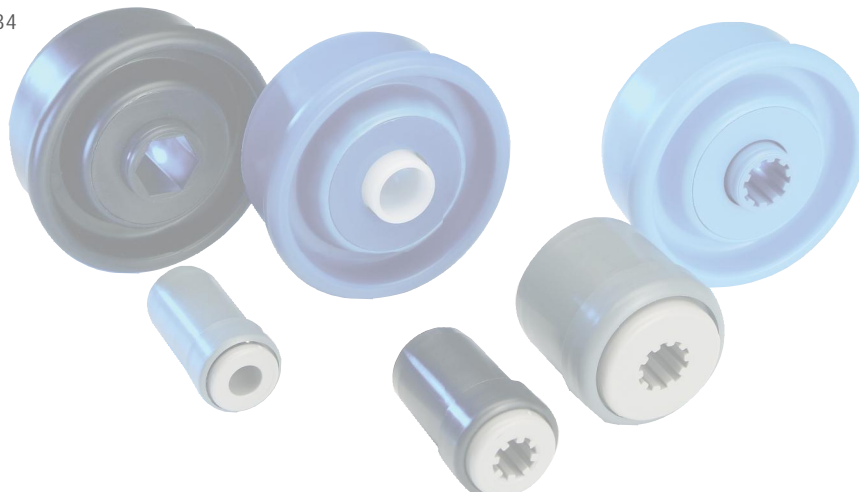
KTR



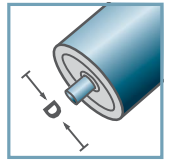
KTR-02/03					
Type	Normal .02	Inox .03	Di +0,2	Da	force portante C [daN]
KTR-50x1,5	x	x	47,3	49,9	10
KTR-50x2,8	x	x	44,6	49,9	10

Des dimensions ultérieures sur demande!

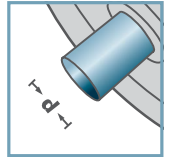
- ☛ Boitier: plastique
- ☛ Moyeu: plastique
- ☛ Couvrcle des roulements: plastique
- ☛ Cage: plastique
- ☛ Boule
 - ☛ 02: acier
 - ☛ 03: 1.4034



KTR-02
KTR-03



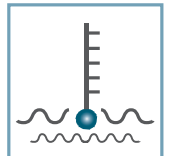
D [mm]
50



d [mm]
12; SW11



C [daN]
10

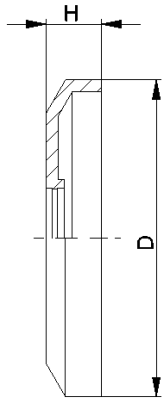


T [°C]
0° - 80°



Carton [pc.]

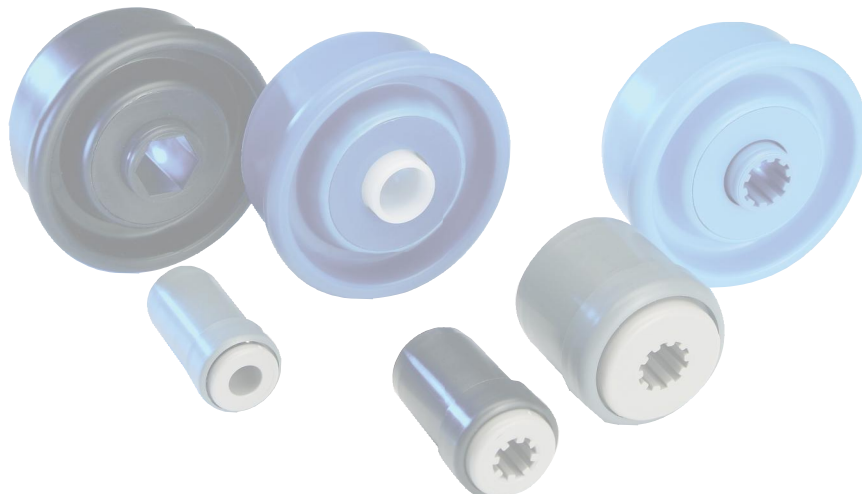
250



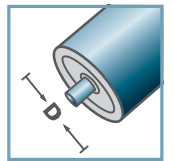
DK-KTR		
Type	D	H
DK-KTR-02	40,5	7

Des dimensions ultérieures sur demande!

☛ Capot d'étanchéité; plastique

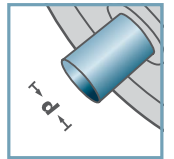


DK-KTR-02



D [mm]

-



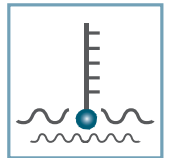
d [mm]

-



C [daN]

-



T [°C]

0° - 80°



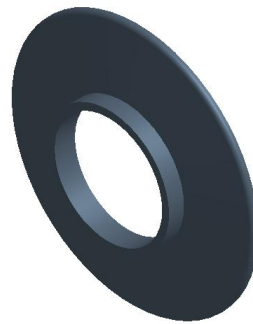
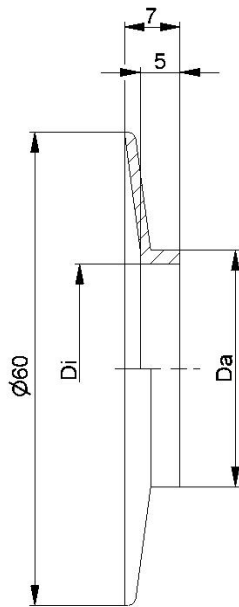
-



Carton [pc.]



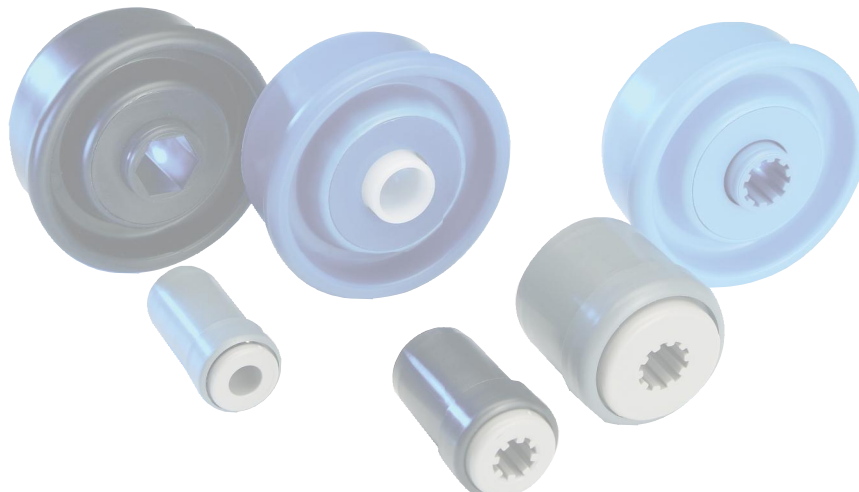
KTR



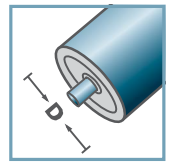
BS-		
Type	Di	Da
BS-30x1,8	26,5	29,9
BS-40x1,5	37,1	39,9
BS-40x2,3	35,5	39,9

Des dimensions ultérieures sur demande!

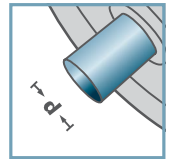
☛ Disque de guidage: plastique



BS-



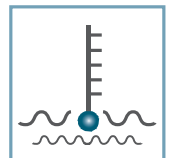
D [mm]
-



d [mm]
-



C [daN]
-



T [°C]
0° - 80°



-



Carton [pc.]

