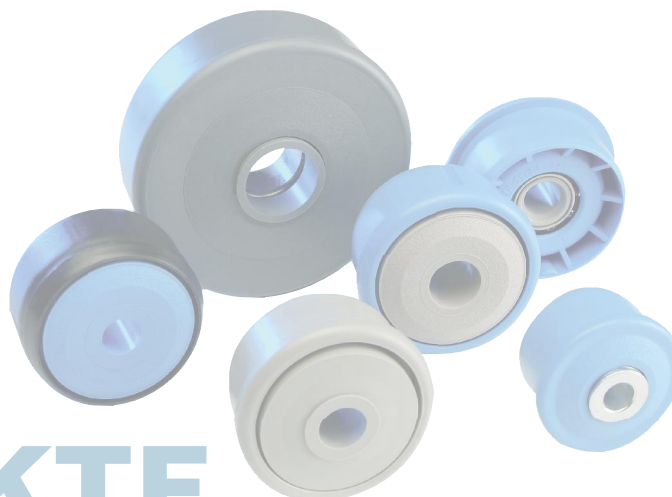


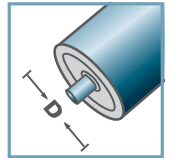
| KTR-30 | | | |
|---------------|---------|------|---------------------------|
| Type | Di +0,2 | Da | force portante C [daN] |
| KTR-50x1,5.30 | 47,3 | 49,9 | 80 |
| KTR-50x2,8.30 | 44,6 | 49,9 | 80 |
| KTR-60x1,5.30 | 57,3 | 59,9 | 80 |

Des dimensions ultérieures sur demande!

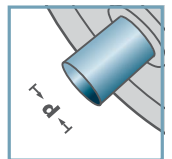
- ☛ Boîtier: plastique
- ☛ Labyrinthe Simple: plastique
- ☛ Palier RL-30
 - ☛ Coquille de roulement: acier, trempée
 - ☛ Anneau de roulement intérieur: acier, trempé
 - ☛ Cage: plastique
 - ☛ Boule: acier



KTR-30



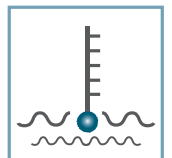
D [mm]
50 - 60



d [mm]
10; 12; 15; SW11



C [daN]
80



T [°C]
0° - 80°



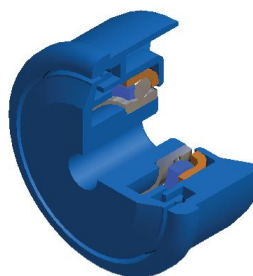
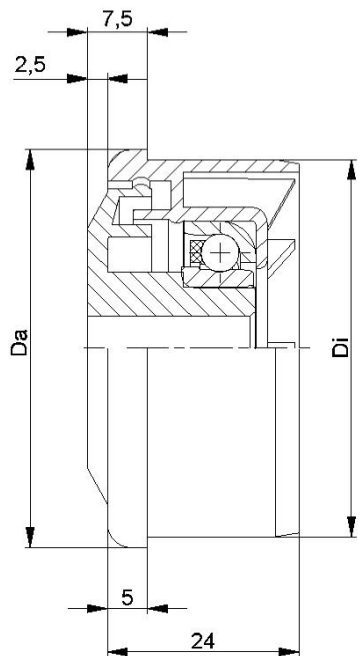
huile



Carton [pc.]

ø50: 250
ø60: 200

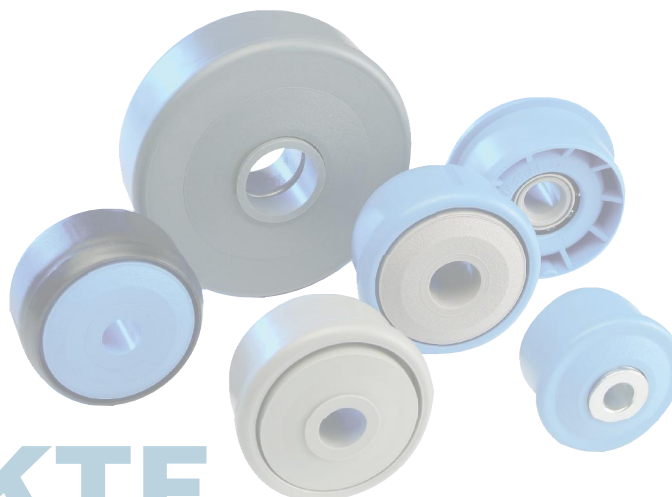
KTR/KTE



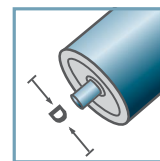
| KTR-31 | | | |
|---------------|---------|------|---------------------------|
| Type | Di +0,2 | Da | force portante C [daN] |
| KTR-50x1,5.31 | 47,3 | 49,9 | 25 |
| KTR-50x2,8.31 | 44,6 | 49,9 | 25 |
| KTR-60x1,5.31 | 57,3 | 59,9 | 25 |

Des dimensions ultérieures sur demande!

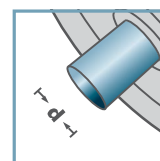
- ☛ Boîtier: plastique
- ☛ Labyrinthe Simple: plastique
- ☛ Palier RL-31
 - ☛ Coquille de roulement: 1.4301
 - ☛ Anneau de roulement intérieur: 1.4305
 - ☛ Cage: plastique
 - ☛ Boule: 1.4301



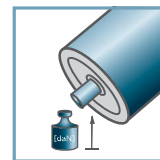
KTR-31



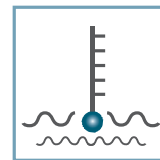
D [mm]
50 - 60



d [mm]
10; 12; 15; SW11



C [daN]
25



T [°C]
0° - 80°



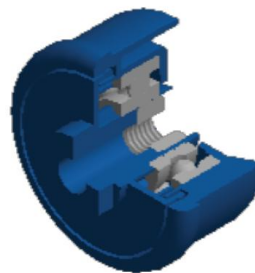
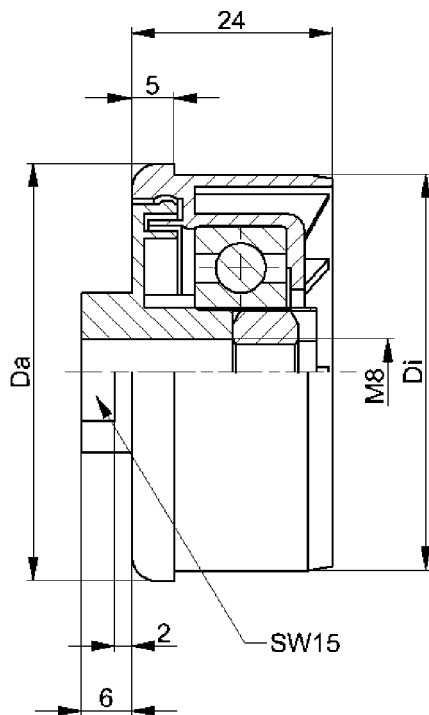
huile



Carton [pc.]

ø50: 250
ø60: 200

KTR/KTE

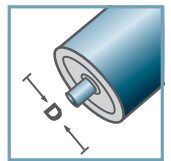


| KTR-40.M8 | | | |
|---------------|---------|------|---------------------------|
| Type | Di +0,2 | Da | force portante C [daN] |
| KTR-50x1,5.40 | 47,3 | 49,9 | 80 |

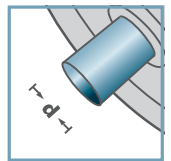
Des dimensions ultérieures sur demande!

- ☛ Boîtier: plastique
- ☛ Labyrinthe simple: plastique
- ☛ Palier 6202
- ☛ Écrou hexagonal

KTR-40.M8



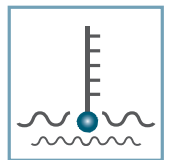
D [mm]
50



d [mm]
M8



C [daN]
80



T [°C]
0° - 80°

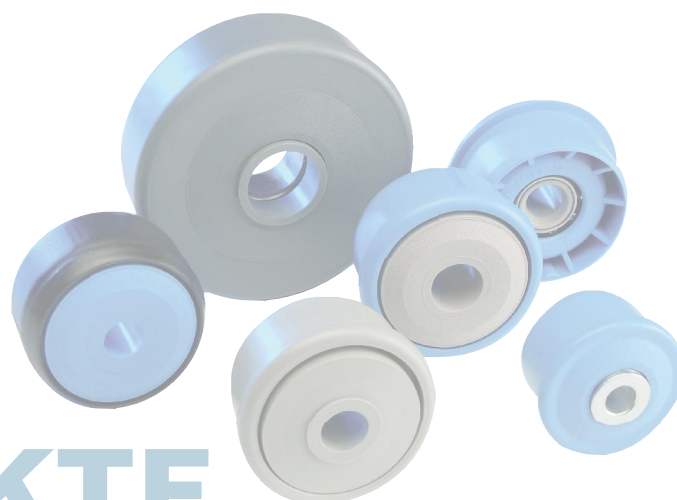


EP 2

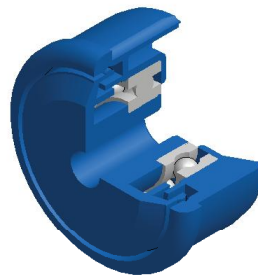
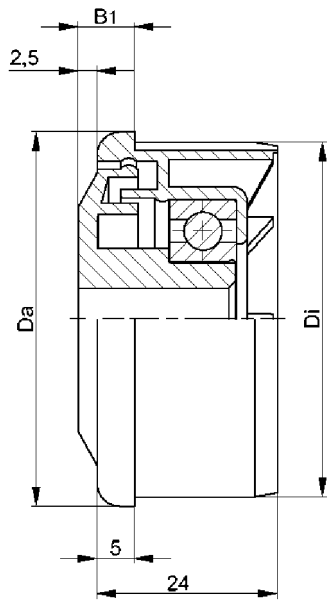


Carton [pc.]

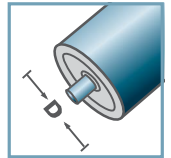
ø50: 250



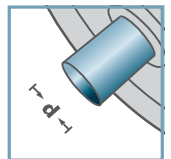
KTR/KTE



KTR-42



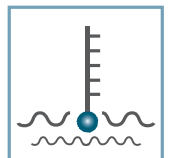
D [mm]
40 - 60



d [mm]
10; 12; 15; SW11



C [daN]
80



T [°C]
0° - 80°



EP 2



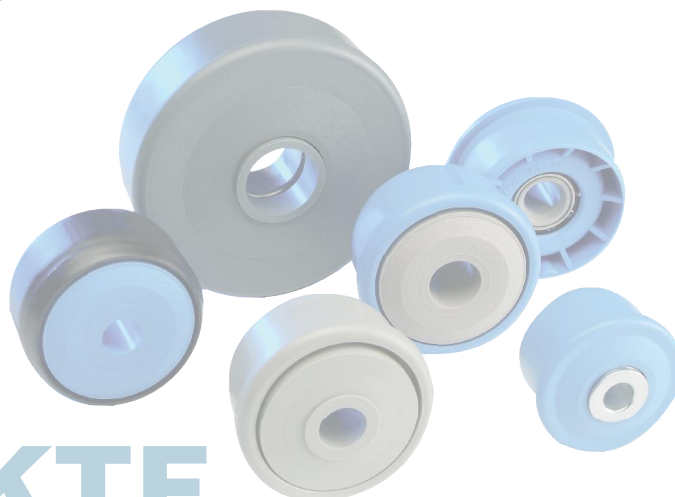
Carton [pc.]

ø40: -
ø50: 250
ø60: 200

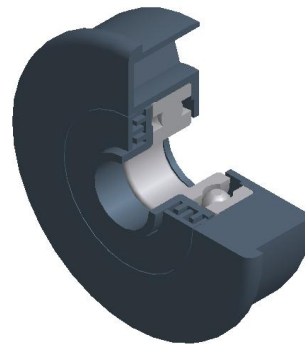
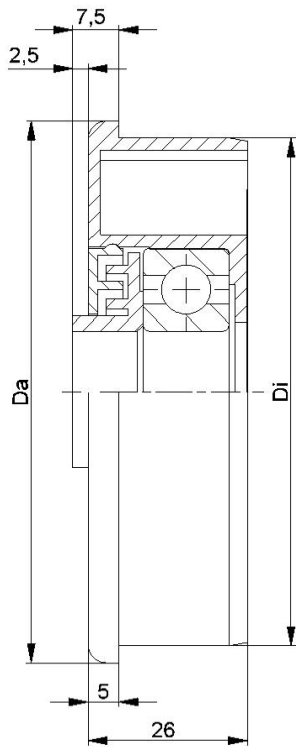
| KTR-42 | | | | |
|---------------|----------|------|-----|---------------------------|
| Type | Di +0,25 | Da | B1 | force portante C [daN] |
| KTR-40x1,5.42 | 37,2 | 39,9 | 9,0 | 80 |
| KTR-50x1,5.42 | 47,3 | 49,9 | 7,5 | 80 |
| KTR-50x2,0.42 | 46,3 | 49,9 | 7,5 | 80 |
| KTR-50x2,8.42 | 44,6 | 49,9 | 7,5 | 80 |
| KTR-60x1,5.42 | 57,3 | 59,9 | 7,5 | 80 |
| KTR-60x2,0.42 | 56,3 | 59,9 | 7,5 | 80 |

Des dimensions ultérieures sur demande!

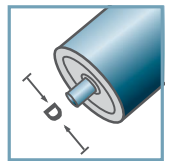
- Boîtier: plastique
- Labyrinthe simple: plastique
- Palier 6002



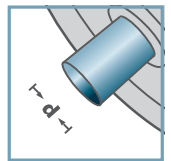
KTR/KTE



KTR-44



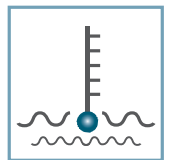
D [mm]
89



d [mm]
20



C [daN]
150



T [°C]
0° - 80°



EP 2



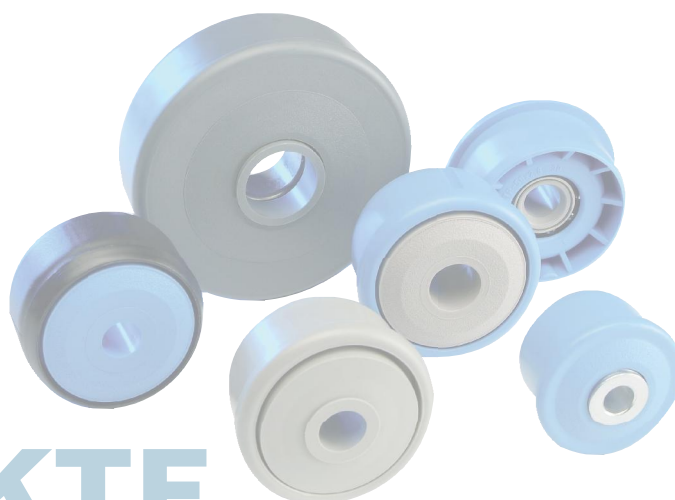
Carton [pc.]

80

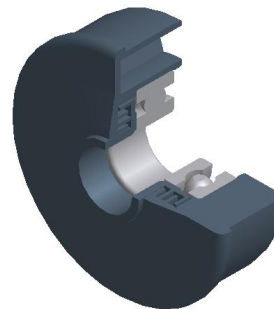
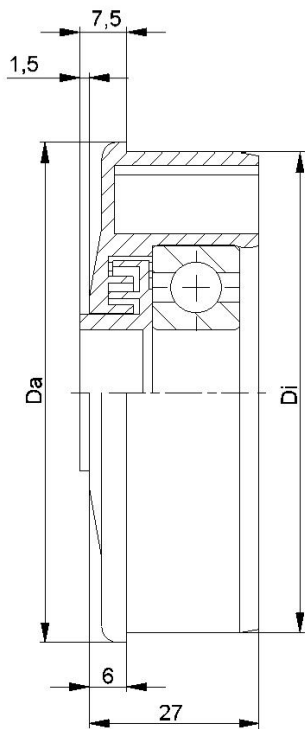
| KTR-44 | | | |
|---------------|---------|------|---------------------------|
| Type | Di +0,2 | Da | force portante C [daN] |
| KTR-89x3,0.44 | 83,3 | 88,9 | 150 |

Des dimensions ultérieures sur demande!

- ☛ Boîtier: plastique
- ☛ Labyrinthe intérieur: plastique
- ☛ Labyrinthe extérieur: plastique
- ☛ Palier 6204



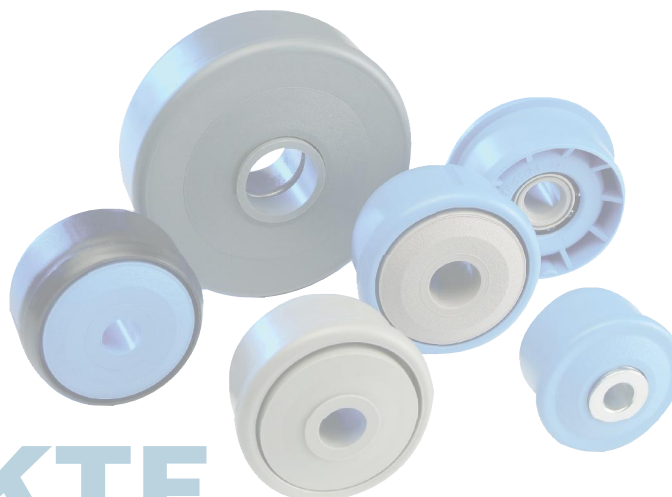
KTR/KTE



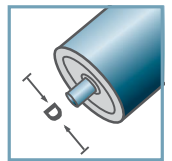
| KTR-43/44 | | | |
|---------------------|---------|------|---------------------------|
| Type | Di +0,2 | Da | force portante C [daN] |
| KTR-63,5x2,9.43/.44 | 58,0 | 63,4 | 150 |
| KTR-80x2,0.43/.44 | 76,4 | 79,9 | 150 |

Des dimensions ultérieures sur demande!

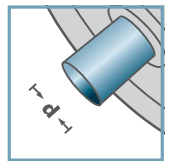
- ☛ Boîtier: plastique
- ☛ Labyrinthe multiple: plastique
- ☛ Palier 6303/6204



KTR-43/44



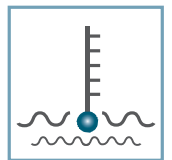
D [mm]
63,5 - 80



d [mm]
6303: 17
6204: 20



C [daN]
150



T [°C]
0° - 80°



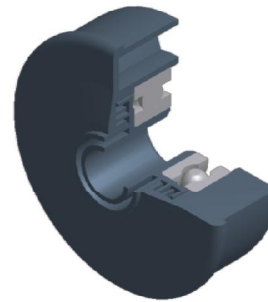
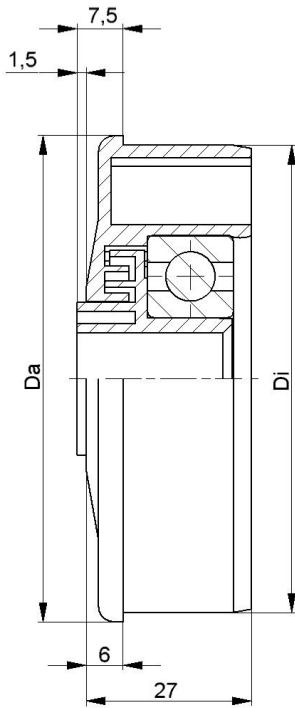
EP 2



Carton [pc.]

100

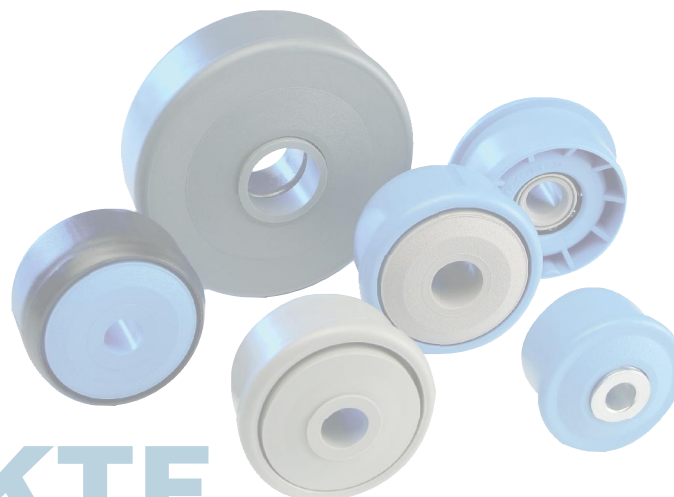
KTR/KTE



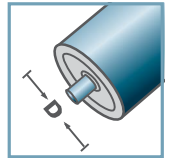
| KTR-43/44 | | | |
|---------------------|---------|------|---------------------------|
| Type | Di +0,2 | Da | force portante C [daN] |
| KTR-63,5x2,9.43/.44 | 58,0 | 63,4 | 150 |
| KTR-80x2,0.43/.44 | 76,4 | 79,9 | 150 |

Des dimensions ultérieures sur demande!

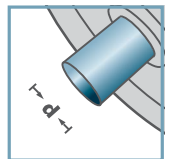
- ☛ Boîtier: plastique
- ☛ Labyrinthe multiple: plastique
- ☛ Palier 6303/6204



KTR-43/44



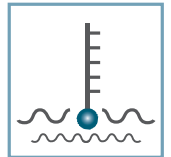
D [mm]
63,5 - 80



d [mm]
6303: 12
6204: 15



C [daN]
150



T [°C]
0° - 80°



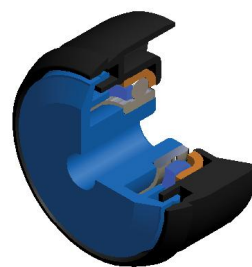
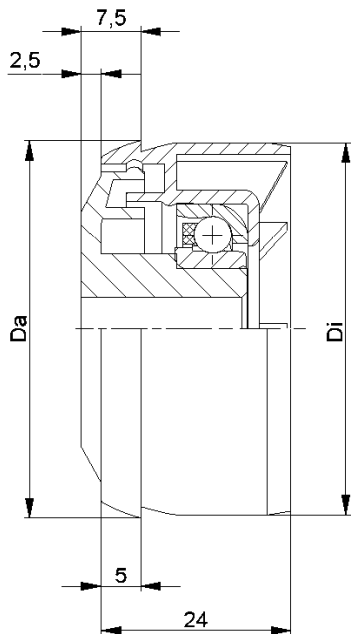
EP 2



Carton [pc.]

100

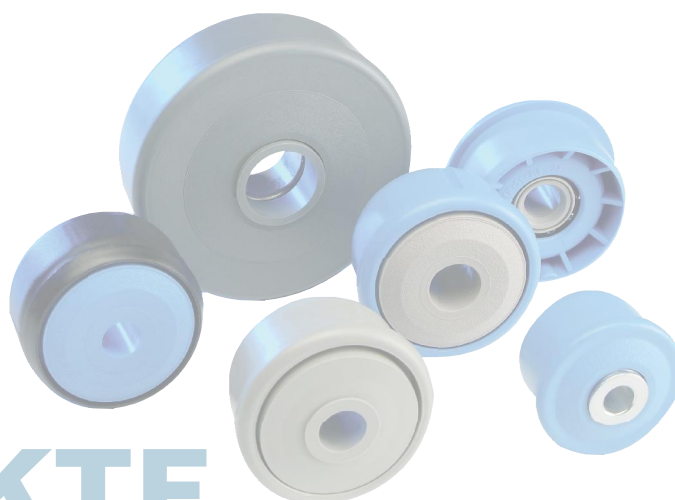
KTR/KTE



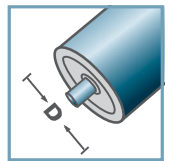
| KTE-30 | | | |
|---------------|---------|------|---------------------------|
| Type | Di +0,3 | Da | force portante C [daN] |
| KTE-50x1,5.30 | 47,1 | 47,9 | 80 |

Des dimensions ultérieures sur demande!

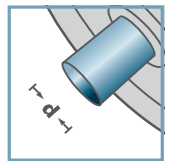
- ☛ Boîtier: plastique
- ☛ Labyrinthe simple: plastique
- ☛ Palier RL-30
 - ☛ Coquille de roulement: acier, trempée
 - ☛ Anneau de roulement intérieur: acier, trempé
 - ☛ Cage: plastique
 - ☛ Boule: acier



KTE-30



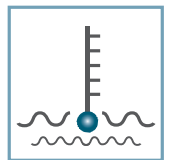
D [mm]
50



d [mm]
10; 12; 15; SW11



C [daN]
80



T [°C]
0° - 80°



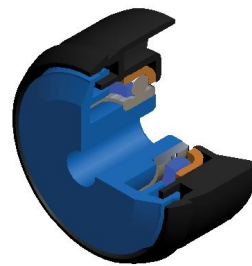
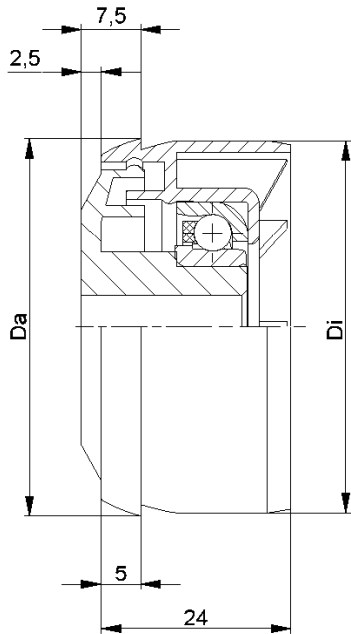
huile



Carton [pc.]

250

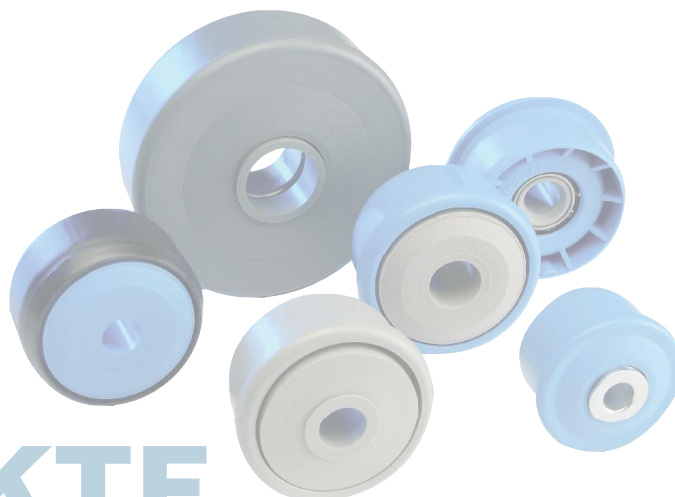
KTR/KTE



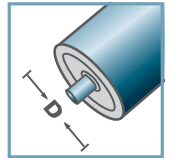
| KTE-31 | | | |
|---------------|---------|------|---------------------------|
| Type | Di +0,3 | Da | force portante C [daN] |
| KTE-50x1,5.31 | 47,1 | 47,9 | 25 |

Des dimensions ultérieures sur demande!

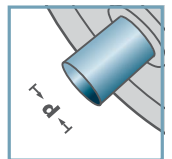
- ☛ Boîtier: plastique
- ☛ Labyrinthe simple: plastique
- ☛ Palier RL-31
 - ☛ Coquille de roulement: 1.4301
 - ☛ Anneau de roulement intérieur: 1.4305
 - ☛ Cage: plastique
 - ☛ Boule: 1.4301



KTE-31



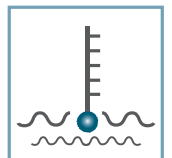
D [mm]
50



d [mm]
10; 12; 15; SW11



C [daN]
25



T [°C]
0° - 80°

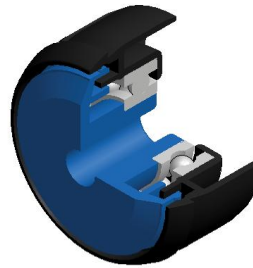
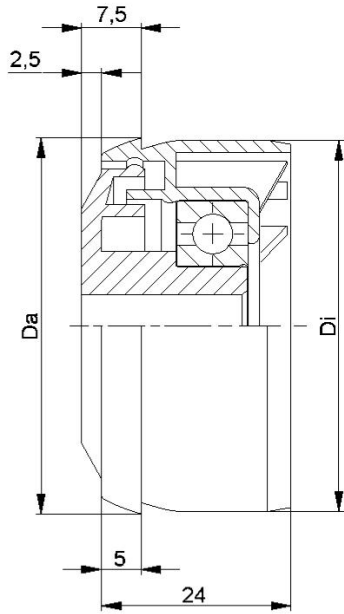


huile



Carton [pc.]

250

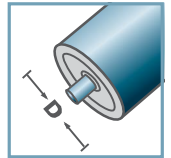


| KTE-42 | | | |
|---------------|---------|------|---------------------------|
| Type | Di +0,3 | Da | force portante C [daN] |
| KTE-50x1,5.42 | 47,1 | 47,9 | 80 |

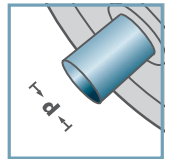
Des dimensions ultérieures sur demande!

- ☛ Boîtier: plastique
- ☛ Labyrinthe simple: plastique
- ☛ Palier 6002

KTE-42



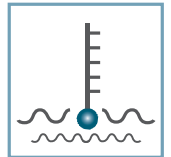
D [mm]
50



d [mm]
10; 12; 15; SW11



C [daN]
80



T [°C]
0° - 80°

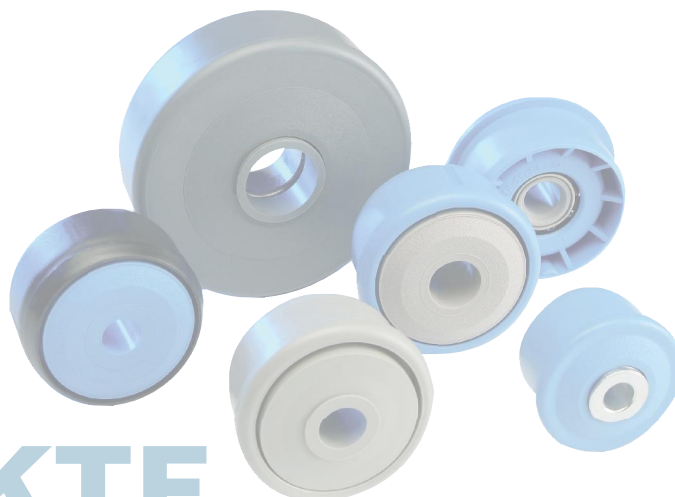


EP 2



Carton [pc.]

250



KTR/KTE